



INFOSEC WITH EXPERIENCE®

BIOMETRIC ACCESS CONTROL

SECURITY PACKED WITH EXPERIENCE

At VROfficePlace, we crafted some of the most advanced yet simple to integrate products. With Mission Critical in mind, we offer flexibility of using existing equipment without compromising security.

FACIAL RECOGNITION TO YOUR USE CASE APPLICABLE



Content

INTRODUCTION

OVERVIEW 04

NEURAL NETWORK EVENT ENGINE 06

COMPATIBILITY 08

PROJECT

Technical Details 10

Area of Coverage 12

Project Timelines 18

Additional Infrmatons 20

LET US INTRODUCE PULSLOGIC


PulsLogic is most advanced biometric access control in the industry based on real time video analysis, facial and voice recognition, available as Cloud service or on-premise installation.


PULSLOGIC is simple yet powerfull neural network powered access control system. It takes video feed life from your Surveillance Cameras, find a match against the defined persons and priviledges, performing a custom defined action.

Advanced features such as Integration with AD and various hardware controllers allows you to simplify your access control system based on person biometrics. As simple as that, PULSLOGIC can perform various operations from as door opening to computer login. Without a need for password, with absolute zero amount of false positives.

Moreover, it records all the activity with the timestamps allowing advanced analytics from employee time tracking to security audits. Furthermore, it can execute predefined commands, trigger an alerts and perform intrusion detection.

Unrecognized person in protected area? Yes, PULSLOGIC can even give you a call, text you or execute any other API call.

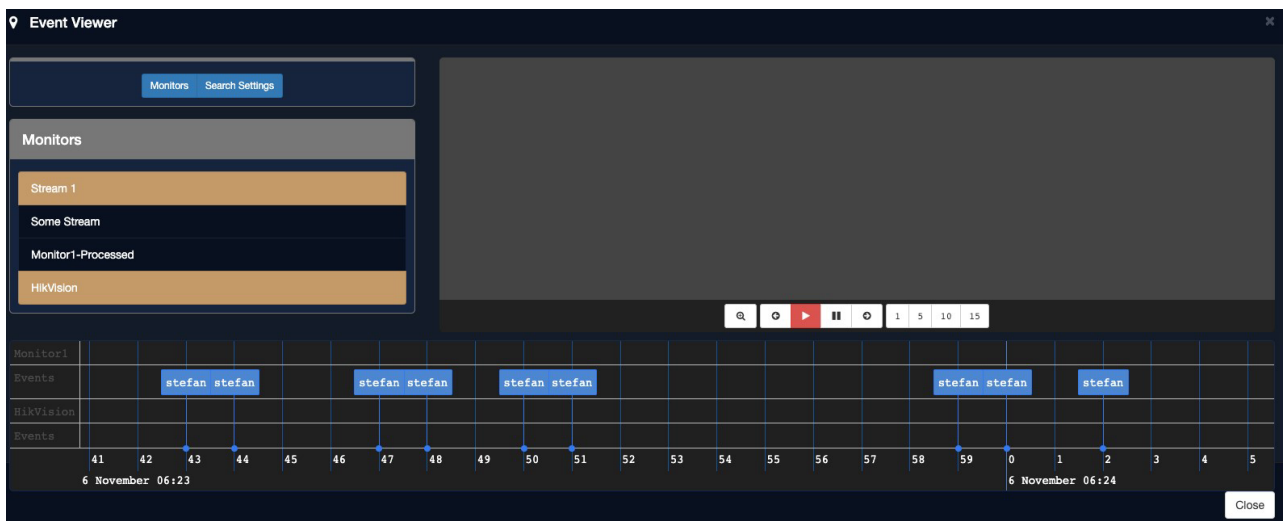




SIMPLE TO
OPERATE YET
POWERFUL

MEET OUR
EVENT ENGINE

Full audit of captured events. Not only we can recognize person, we can recognize an object, licence plate, voice or noise.



You are in realtime control on events

Select cameras of your interest and replay or find specific timestamps. Review events or generate reports. From time tracking to people counters. Define patterns and action by person name, draw your zones, define alert states.

Detector Filters

Saved Filters : Add New

Filters: Add New

Filter Name: tracking stefan

Conditions

Object Tag: Equal to: stefan AND

Action for Selected

Drop Event: No

Save Events to SQL: Default

Email on Trigger: Yes

Webhook on Trigger: Yes

Close Delete Save

PULSLOGIC
MAKES USE
OF EXSISTING
EQUIPMENT

TECHNICAL DETAILS



We

SUPPORTED PROTOCOLS

understand your work with different vendors, so we did our best to cover industry standards and integration protocols. So far, we can hook up more than 90% of camera vendors and counting.

STREAM ANALYSIS

JPEG

We understand your vendors, so we did our best to work with different to cover industry standards and integration

MJPEG

protocol than 90% of camera vendors and co. So far, we can hook up more unting.

H.264

H.265

H.265+

MPEG4

RTMP

Face Recognition

Object Detection



Intrusion Alerts

INTEGRATION

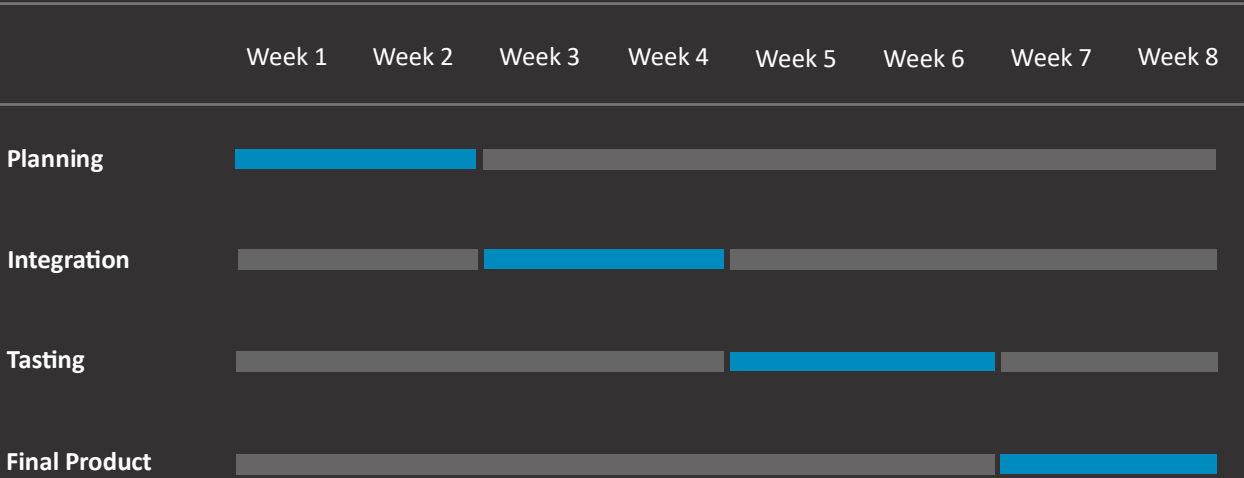
**MODULAR AT ANY
USE CASE**

PULSLOGIC is highly modular platform. As such, we work closely with your team to provide a turn-key solution.

At Infosec with Experience® we collect all the neceserly informations within initial agreement and make sure everything is integrated, properly tested and bulletproof for any issues. Typical highl level complexity project takes 8 weeks assuming full AD integration and all available modules. Custom requests are also considered and implemented prior to testing stage.

PROJECT TIMELINE

Actual times may vary, but to provide you valuable informations on what to expect, we would like to present usual stages we go through setting up the system . You have full visibility of what has been done at any point as well full ability to come up with changes and discuss our engineers the best possible approach to meet your goals.



Upon acceptance, we offer multiple support plans , initial trainings and knowledge transfers. Our product is subject to a Long Term support.

MORE INFORMATION

24/7 Support: support@certic.info
<https://www.certic.info>

NOTES

NOTES

<https://www.certic.info>